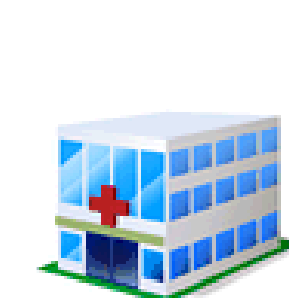
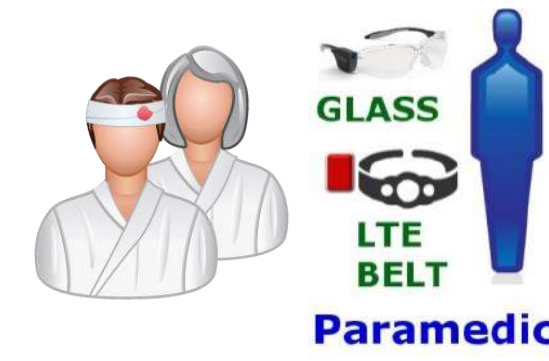


Quality of Service and prioritisation for emergency services in the LTE RAN stack

Q4HEALTH



The Concept

- ▲ **BlueEye is a Live Interactive Video Platform for First Responders.** It is a wearable video system based on a glass mounted camera including audio which enables live interactive point of view video to be streamed to a command center to provide real time interactive support.
- ▲ Optimization of real time video for emergency services over LTE
- ▲ Study video performance in scenarios with wearable live video for first responders.
- ▲ **During the 'golden hour' after the incident, pre-hospital actions taken are crucial and potentially lifesaving.**
- ▲ Set of experiments conducted over the PerformNetworks and OpenAirInterface FIRE platforms.

Q4HEALTH Showcases

1) Malaga Police service.

- Monitoring of security public activities during the public and cultural event, Feria de Málaga 2017.

2) Granada 061 emergency service.

- Simulation of two emergency scenarios:

1) Hemiparesia, ictus code.

2) Multiple accident

MALAGA POLICE

- Two BlueEye backpack units on the field.
- A Desk Application at Command Centre
- 4G Network connection
- Video/audio real-time communication between the police in the emergency scenario and the operations commander at the Command Centre.

- Recognition of the emergency level and needed resources in situ
- Coordination with other emergency services
- Access controls and restrictions
- Collecting evidence
- Post-processing of video for identification operations and action plan evaluation

Showcase



GRANADA, 061

- Two BlueEye units in the emergency scene and ambulance.
- A Desk Application in the Emergency Centre.
- 4G Network connection
- Video/audio real-time communication between the paramedic in the emergency scenario and the emergency doctor at Hospital.

- The emergency doctor advises the paramedic thanks to the real-time video/audio communication
- Earlier diagnostics
- Faster response times

